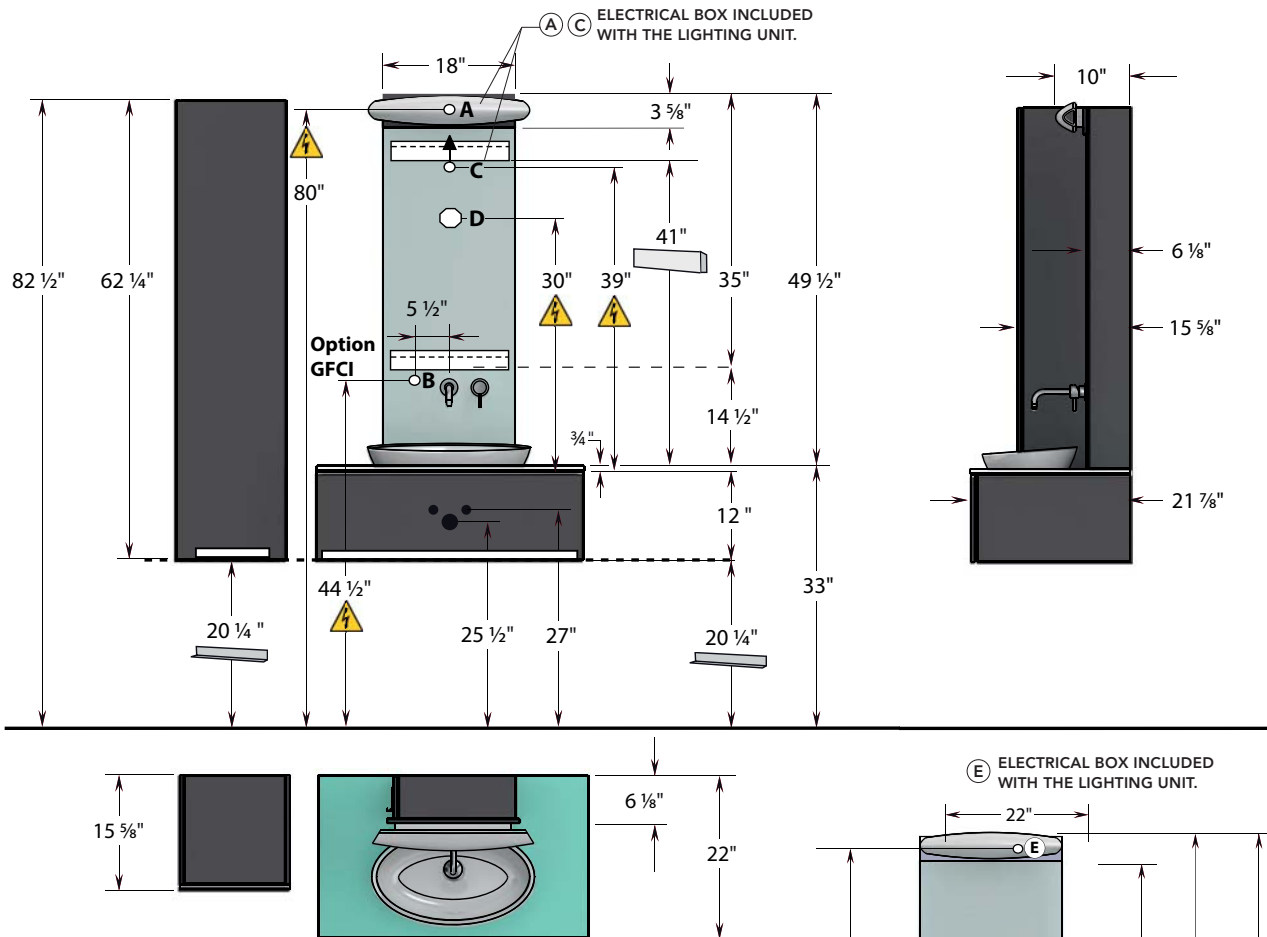


# SWEET HOME | DISTINCTION

## DIMENSIONS



### MODEL WITH MIRRORED MEDICINE CABINET

#### (A) MAIN LIGHTING

Bring a 110V outlet at 80" from the floor and connect it to the main switch.

#### (B) OPTION GFCI

Bring a 110V wire at 44 1/2" from the floor and at 5 1/2" from the center of the sink or the mirror.

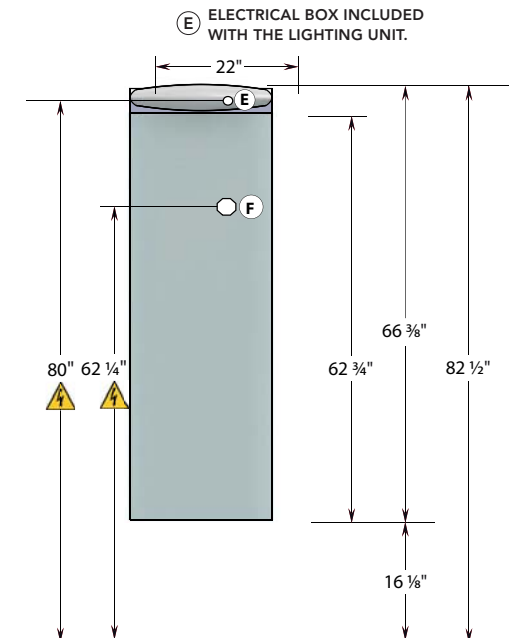
### MODEL WITH FLAT MIRROR

#### (C) MAIN LIGHTING

Bring a 110V wire at 71 1/4" from the floor (39" + 32 1/4") and connect it to the main switch.

#### (D) OPTIONAL LED MOOD LIGHTING

The mood lighting being activated by a motion detector included in the mirror. You must plan an octagonal box 62 1/4" from the floor and independent from the main switch. Bring the transformer wire in the wall up to the electrical box.



### TALL WALLMOUNT MIRROR

#### (E) MAIN LIGHTING

Bring a 110V wire at 80" from the floor and connect it to the main switch.

#### (F) OPTIONAL LED MOOD LIGHTING See (D).

# SWEET HOME | DISTINCTION

## DIMENSIONS



SWEET vessel mounted on countertop



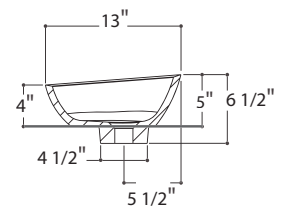
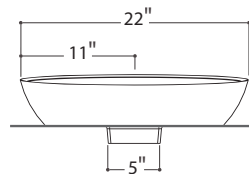
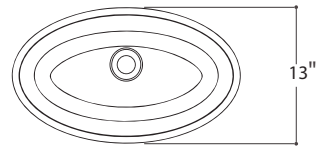
SWEET semi-recessed vessel



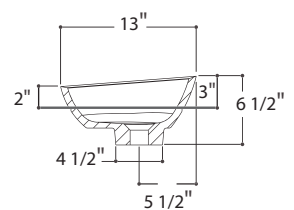
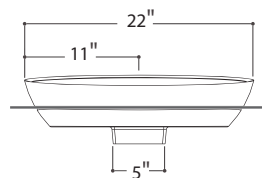
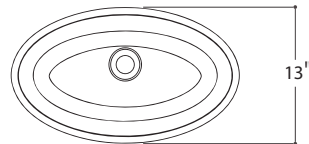
Oval shape vessel



### ABOVE COUNTER



### SEMI-RECESSED



### NEEDED SPACE FOR MEDICINE CABINET OPENING



#### Warning!

Opening of the medicine cabinet needs a clearance of 11 1/2" from the wall or from the linen cabinet.