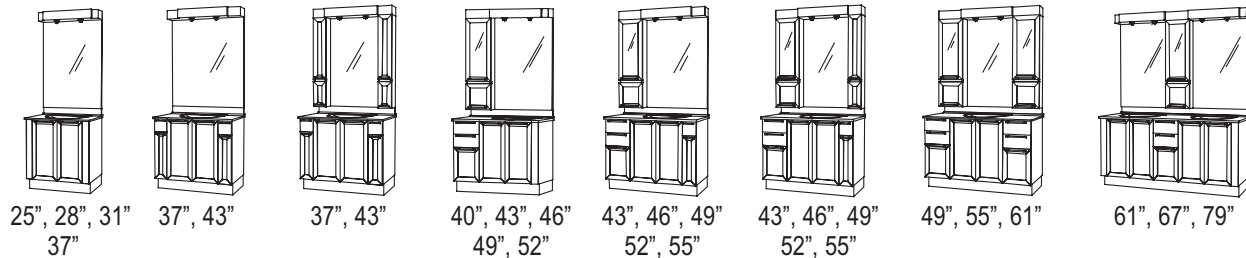
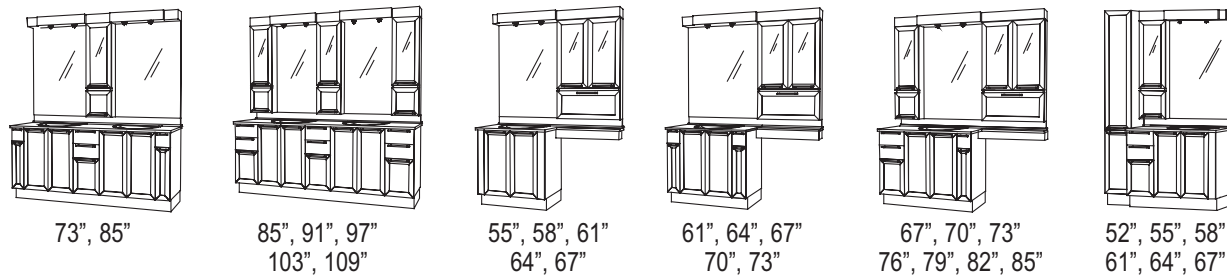


## Available arrangements

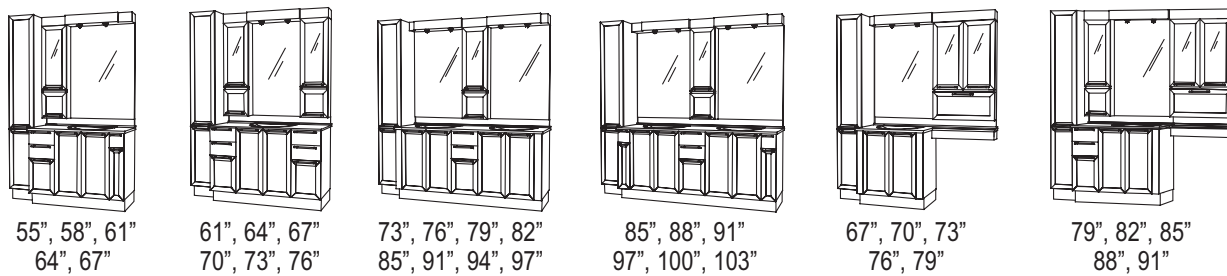
Some dimensions can be varied and layouts can be reversed



Models with extended medicine cabinet OR auxiliary dressing table

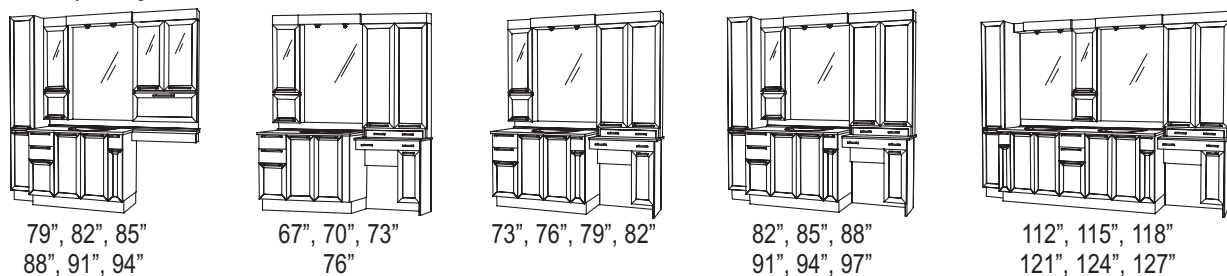


Extended medicine cabinet OR auxiliary dressing table



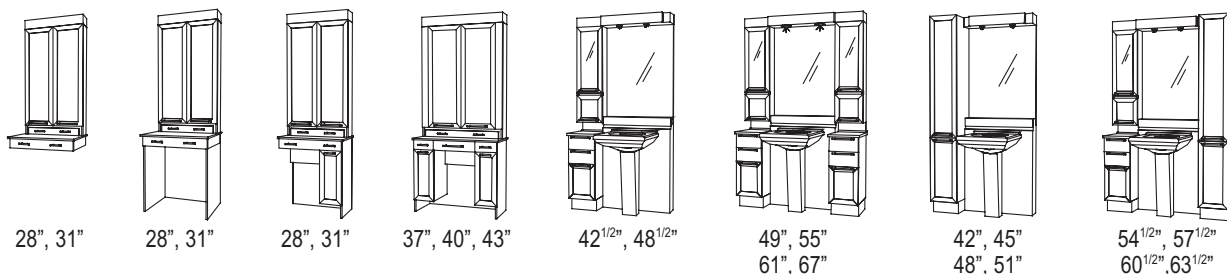
Medicine cabinet or  
auxiliary dressing table

Models with dressing table



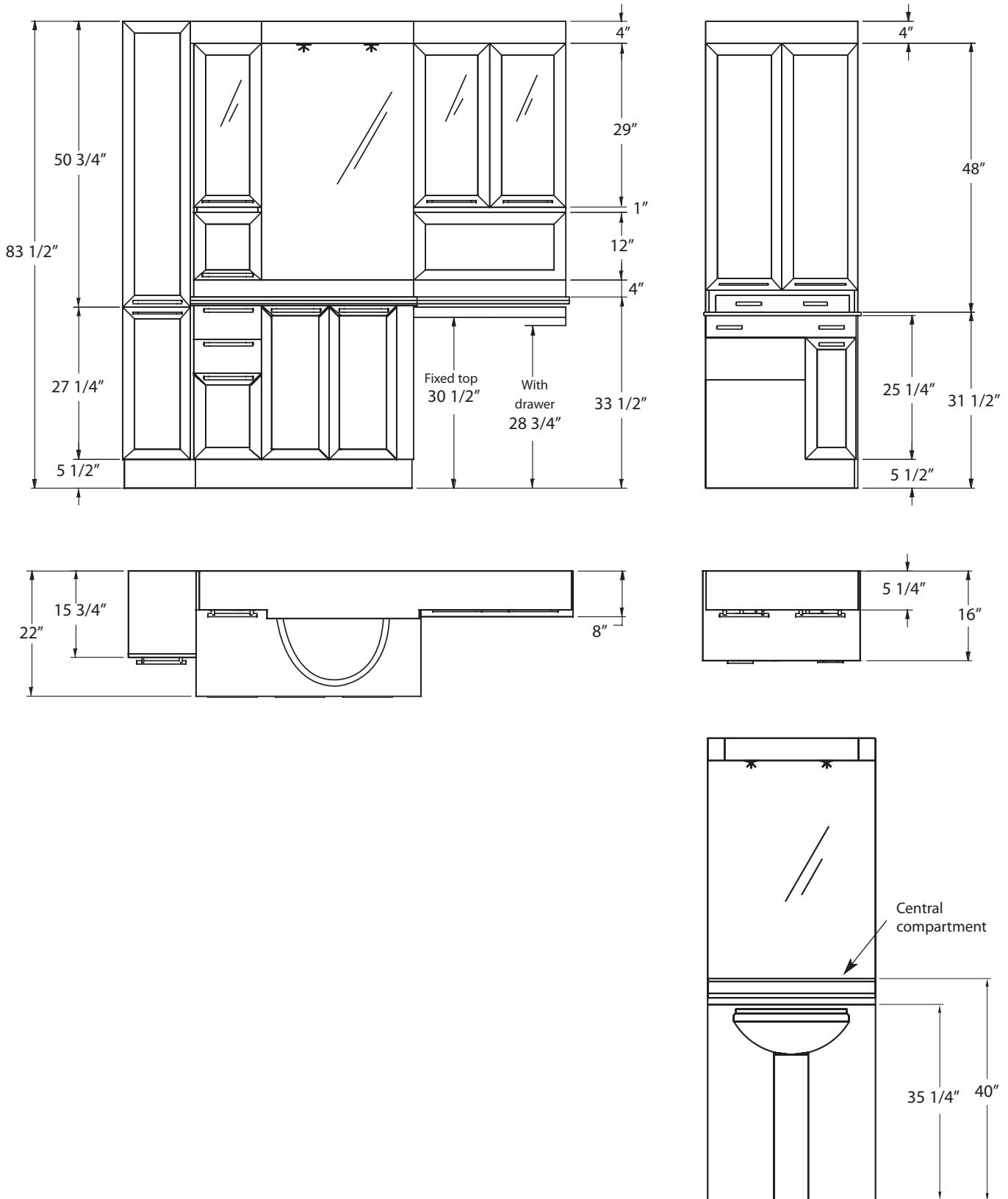
Dressing tables

Models for pedestal washbasin





Dimensions



## TECHNICAL SPECIFICATIONS

### Planning notes

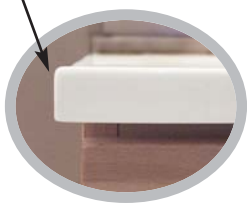


A filler always closes the gap between the linen cabinet, the medicine cabinet and the vanity.

- Standard filler: 1/2"
- With glass & marble: 5/8"

#### POLYMER VANITY TOP

- 1/2" overlap



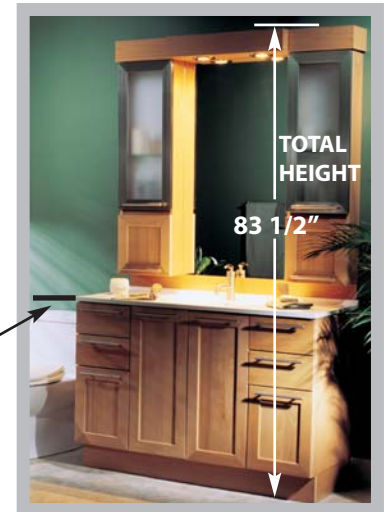
#### GLASS OR MARBLE VANITY TOP

- 5/8" overlap



With an extended countertop, the available height for the toilet is 30 1/2".

If there is a drawer in the extended countertop, the available height is 28 3/4".



### Electrical & plumbing specifications

**110V pigtail with GFCI socket** to connect the male plug of the lighting unit. The back of the lighting unit will have to be cut to give access to the socket.

