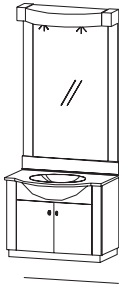


Available arrangements

(Some dimensions can be varied and layouts can be reversed.)

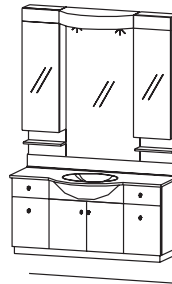
ELIPSE, HEXA AND CAMELEÓN



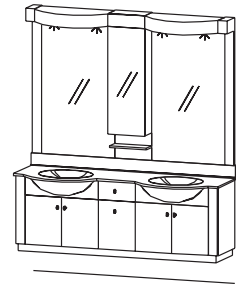
31"



37", 40", 43"



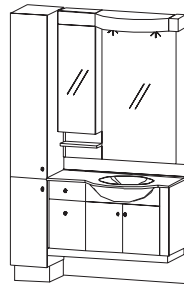
43", 49", 55"



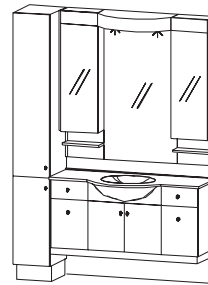
67"



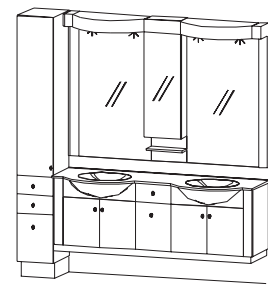
43", 46"



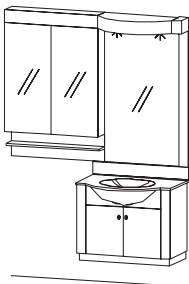
49", 52", 55"
58"



55", 58", 61"
64", 67", 70"



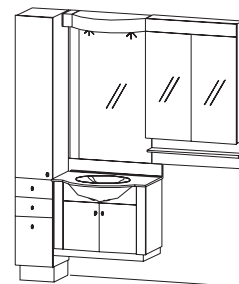
79", 82"



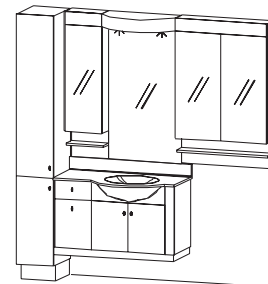
57 1/2"



63 1/2", 66 1/2", 69 1/2"



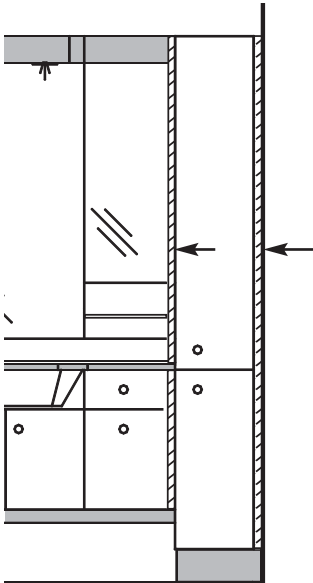
69 1/2", 72 1/2"



75 1/2", 78 1/2"
81 1/2", 84 1/2"

Dimensions are variable

INSTALLATION ON A LATERAL WALL OR LINEN CABINET



The counter and backsplash always exceed the vanity. A filler is therefore always used between the vanity and linen cabinet, the wall and vanity, and the wall and linen cabinet.

- Between linen and wall: 5/8" filler
- Between vanity and wall: 5/8" filler
- Between vanity and linen cabinet: 1/2" filler with polymer and 5/8" filler with marble or glass countertop.



With a marble or glass countertop, it is necessary to add 1/4" to the total width indicated in the price list.

THE TOTAL WIDTH IS VARIABLE

The total width can be adjusted in the Optimum Series to fit with the bathroom space. When ordering between 2 walls, or an arrangement larger than the ones suggested in the price list, **you must go up to the next size pricing.** The size of the furniture will be adjusted accordingly.

If your dimensions are larger than the larger size in the price list, please contact the Customer service.

Example:

- Available space is 46"
- Furniture dimensions in the price list are 43" or 49"
- The price of 49" arrangement must be selected. The modules will be enlarged to fit the 46". If needed, a filler will complete the adjustment.

